



EMA 2026 Annual Meeting
April 14 – 17, 2026
The Fairmont Grand Del Mar
San Diego, CA



Adapting for Tomorrow.
Leading Communication Forward.



WELCOME!

Dear EMA 2026 Annual Meeting Attendees,

On behalf of the Board of Directors of the *Envelope Manufacturers Association*, I am proud to welcome you to our 2026 Annual Meeting in beautiful San Diego.

Our theme this year, **Adapting for Tomorrow. Leading Communications Forward**, speaks directly to the moment we are in as an industry. Change is constant — in postal policy, technology, workforce dynamics, and the broader economy. But what defines EMA members is not simply that we respond to change. We lead through it.

Over the next several days, you will hear from an exceptional lineup of speakers who bring perspective from across government, industry, and academia. We are honored to welcome **Tammy Hull**, Inspector General of the **United States Postal Service**, and **Thomas Day**, Commissioner of the **Postal Regulatory Commission**, who will share insights into oversight, accountability, and the regulatory outlook shaping the future of mail.

We will also gain forward-looking economic intelligence from **Jason Schenker**, helping us understand the forces influencing business, labor, and global markets — including how artificial intelligence is transforming manufacturing and communications.

From the innovation side of our industry, **Amy Servi-Bonner** of **PRINTING United Alliance** will explore the growing impact of AI and automation on print and manufacturing workflows. These conversations are not theoretical — they are practical, actionable, and directly relevant to how we compete and grow.

We are also excited to hear from **Robyn Benincasa**, whose message of resilience, teamwork, and high-performance leadership will challenge us to think differently about how we show up for our teams. And we'll enjoy perspective from **Rich Ohrmberger**, whose experience in professional football offers powerful lessons about preparation, collaboration, and winning together.



Adapting for Tomorrow. Leading Communications Forward »

EMA's 2026 Annual Meeting

But just as important as what happens on stage is what happens between sessions.

EMA's Annual Meeting is a forum unlike any other. It is where competitors become collaborators in solving shared challenges. It is where we have candid conversations about workforce pressures, supply chain realities, equipment reliability, and sustainability. It is where we exchange ideas about customer expectations, new technologies, and the evolving role of paper-based communications.

This annual event is also where we reconnect with longtime friends, build new partnerships, and enjoy the energy that comes from being together in person.

From our networking receptions and dinners to the informal hallway conversations that often spark the best ideas, this meeting is designed to strengthen relationships and reinforce why EMA remains such a vital organization for our industry.

The envelope manufacturing sector plays a critical role in connecting businesses and consumers across this country. The work we do supports secure communications, small business growth, rural communities, and millions of American jobs. EMA exists to ensure that voice remains strong — and that our industry continues leading communications forward.

Thank you for being here. Thank you for your engagement and for your commitment to this industry and to one another.

Let's make it a productive, forward-thinking, and memorable week together.

Warm regards,

David Mitchell

Chairman, Envelope Manufacturers Association

President & COO, MackayMitchell Envelope Company



SCHEDULE

Preliminary Agenda: *Schedule may be subject to change.*

(*Board Members Only)

Tuesday, April 14, 2026

| | |
|---------------------|---------------------------------------|
| 9:00 am – 4:00 pm | Registration & Information Desk |
| 7:00 am – 8:30 am | GEA Board Meeting - Hybrid* |
| 9:00 am – 10:30 am | Board of Directors Meeting* |
| 11:00 am – 12:30 pm | Foundation Board of Trustees Meeting* |
| 1:00 pm – 2:00 pm | Institute for Postal Studies |
| 2:15 pm – 3:15 pm | Institute for Environmental Studies |
| 3:30 pm – 4:30 pm | Institute for Consumer Choice |
| 5:00 pm – 6:00 pm | First-Time Attendee/New Member Mixer |
| 6:00 pm – 7:30 pm | Welcome Reception |

Evening Free

Wednesday, April 15, 2026

| | |
|---------------------|---|
| 7:30 am – 9:00 am | Breakfast |
| 7:30 am – 11:45 am | Registration & Information Desk |
| 8:30 am – 10:00 am | Opening General Session – Keynote Speaker & Awards |
| 10:00 am – 10:15 am | Refreshment Break with Tabletops |
| 10:15 am – 11:45 am | General Session II – Foundation Forum |
| 12:00 pm – 4:30 pm | Catamaran Excursion |
| 1:00 pm | Golf Tournament Shot gun start |
| 1:00 pm – 3:00 pm | Pickleball Tournament |
| 6:30 pm – 10:00 pm | Industry Partners Reception & Party |

Thursday, April 16, 2026

| | |
|---------------------|---|
| 7:30 am – 9:00 am | Breakfast |
| 7:30 am – 11:45 am | Registration & Information Desk |
| 8:30 am – 10:00 am | General Session III – Postal Affairs/Public Policy |
| 10:00 am – 10:15 am | Refreshment Break with Tabletops |
| 10:15 am – 11:45 am | General Session IV - Management/Technology |
| 11:45 am – 1:00 pm | Lunch |
| 1:15 pm – 2:45 pm | Closing Business Session |
| | » Closing Keynote Speaker |
| | » Chairman's & President's Remarks |
| 2:45 pm – 3:30 pm | Meetings & Content Committee Meeting |

Friday, April 17, 2026 **Departures**

Adapting for Tomorrow. Leading Communications Forward »

SESSIONS

Wednesday, April 15, 2026

8:30 am – 10:00 am Opening General Session

Keynote Speaker:

Robyn Benincasa, Team-building Motivational Keynote Speaker

World-class endurance athlete, leadership expert, and firefighter Robyn Benincasa will open the 2026 Annual Meeting with a powerful message on resilience, high-performance teamwork, and thriving under pressure.

Her keynote will challenge attendees to rethink leadership in dynamic environments and build cultures that can adapt, persevere, and win together — setting the tone for a forward-looking and action-oriented meeting.



Robyn Benincasa

10:15 am – 11:45 am General Session II: Foundation Forum

Jason Schenker, President of Prestige Economics

Seizing Economic and Technology Opportunities and Managing Risks for Envelope Manufacturers

In this high-energy keynote, top-ranked economist and leading global futurist Jason Schenker will deliver a practical, data-driven outlook tailored specifically for envelope manufacturing leaders.

Jason will break down:

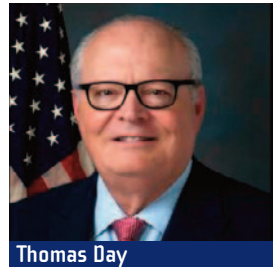
- The U.S. economic outlook
- Inflation, labor markets, and interest rates
- Financial risks and implications for costs, demand, and margins
- Manufacturing trends and supply chain disruption risks
- Tariffs and Cold War Two® geopolitical risks
- AI and automation opportunities
- A clear, nonpartisan look at the 2026 midterm elections and potential policy shifts

This presentation delivers actionable insights to help leaders protect profitability, identify growth opportunities, and stay competitive in a rapidly evolving economic and technological landscape.

Commissioner Thomas Day will provide valuable insight into current Postal Regulatory Commission (PRC) and the evolving regulatory landscape impacting the mailing industry. Drawing on his experience and leadership within United States Postal Service (USPS), Commissioner Day will discuss the PRC's oversight role, key regulatory developments, and what they mean for the USPS and the broader mailing community. His perspective will offer attendees a clearer understanding of the policies and decisions shaping the future of the postal system.



Jason Schenker



Thomas Day

SESSIONS

Thursday, April 16, 2026

8:30 am – 10:00 am **General Session III: Postal Affairs/Public Policy**

» **Tammy Hull, Inspector General, United States Postal Service**, will return to provide an update on the work of the U.S. Postal Service Office of Inspector General (OIG) and its ongoing efforts to promote integrity, accountability, and efficiency within the postal system. Through audits, evaluations, research, and investigations, the USPS OIG plays a critical role in overseeing Postal Service operations and supporting transparency across the organization and its regulator, the Postal Regulatory Commission. Inspector General Hull will offer perspective on current priorities, oversight initiatives, and developments impacting the USPS and the broader mailing community.



Tammy Hull

» **Postal Policy Panel: Inside the Beltway Politics and Nationwide Impacts**

Join **Marie Clarke** as she leads a timely and insightful discussion on the evolving landscape of postal policy. This panel will provide an informed look at where postal policy has been and where it is heading.

This collaborative discussion will explore regulatory developments, legislative activity, and key decisions impacting the United States Postal Service and the broader mailing industry. With an "Inside the Beltway" perspective, panelists will share insights into policy priorities, stakeholder engagement, and the forces shaping the future of the postal system.

Attendees will gain a deeper understanding of today's postal environment and how EMA and our partners and coalitions are influencing decisions with impacts across the country.

10:15 am – 11:45 am **General Session IV: Management & Technology**

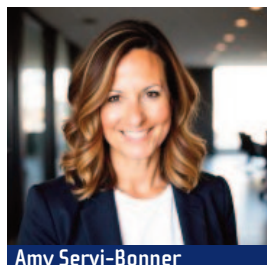
Amy Servi-Bonner, Vice President, Consulting – Applied AI & Printing Technology, Printing United Alliance

Artificial intelligence is already present across envelope manufacturing environments — embedded in software systems, personal productivity tools, and operational workflows. Yet in many organizations, these systems are being used without coordination, ownership, or clear decision accountability.

In this interactive workshop, Amy Servi-Bonner reframes AI strategy as an operational discipline, not a technology initiative.

Instead of focusing on tools, participants will:

- » Map the different "modes" of AI already present in their organizations
- » Identify high-impact decision points on the plant floor



Amy Servi-Bonner

SESSIONS

Thursday, April 16, 2026 (continued)

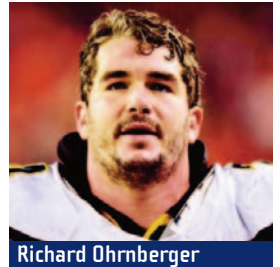
10:15 am – 11:45 am **General Session IV: Management & Technology**
(Continued)

- » Learn a practical four-pillar governance model
- » Leave with a simple framework for aligning AI with measurable operational outcomes

This is not a presentation about AI tools. It is a working session about decisions, ownership, and control tailored specifically to leaders in the printing and envelope industries. EMA thanks Eukalin Corporation for sponsoring this timely and forward-thinking session.

1:15 pm – 2:45 pm **Closing Business Session**

Closing Keynote Speaker: Rich Ohrnberger, brings a dynamic career in athletics and media to the EMA Annual Meeting as the closing keynote speaker. A Penn State University alumnus, Rich played professional football in the NFL with the New England Patriots, Arizona Cardinals, San Diego Chargers, and New York Giants before transitioning into a successful broadcasting career as a radio personality in San Diego. Drawing on his experiences in high-performance team environments, Rich speaks to the importance of listening, adapting, and leading through change. His story also includes a meaningful connection to the mailing industry - Rich's father worked for the U.S. Postal Service at the John F. Kennedy International Mail Facility, giving him a firsthand appreciation for the people and systems that move the mail and connect the country. His perspective aligns with the conference theme, *Adapting for Tomorrow – Leading Communication Forward*, and he will close the program with insights on resilience, leadership, and embracing change, all while keeping a sense of humor along the way.



- » **David Mitchell**, EMA Chairman and President & COO of MackayMitchell Envelope Company, will provide an update on the Association.
- » **Marie Clarke**, EMA President, will provide the President's Report.



SOCIAL

NETWORKING

Tuesday, April 14, 2026

5:00 pm – 6:00 pm

First Time Attendee/New Member Mixer

New members, prospects, first-time attendees, and spouses are invited to attend this event. During the mixer, you will get a chance to meet your host as well as mix and mingle with EMA leadership, Committee Chairs, and staff. This event is designed especially for newcomers, providing an excellent opportunity to meet fellow attendees, learn about the various committees within EMA, and discover how you can actively get involved. If this is your first EMA Meeting, we strongly encourage you to attend!

6:00 pm – 7:30 pm

Welcome Reception

All attendees are invited to the Welcome Reception. This is a great way to begin your meeting experience. Come meet colleagues and make new contacts.



Wednesday, April 15, 2026

6:30 pm – 10:00 pm

Industry Partners Party

An Evening Under the Stars

While EMA is known for its themed Industry Partners Party, the 2026 event will embrace a more relaxed and natural atmosphere — allowing the setting, the experience, and the conversations to take center stage.

Held at the beautifully revamped Grand Social at the Fairmont Grand Del Mar, this multi-level outdoor lounge offers the perfect backdrop for a casual yet sophisticated evening under the San Diego sky. With three levels for mixing and mingling, cabanas, and bocce courts, attendees can unwind, connect, and enjoy the moment.

Guests will experience:

- » Custom Wood Burnished Coasters
- » Live Cigar Rolling
- » A Retro VW Van Photo Booth
- » A DJ spinning throughout the evening
- » Exceptional food and beverages

The focus is simple: great conversation, meaningful connections, and a relaxed evening under the stars with industry colleagues and friends.

ACTIVITIES

[Optional]

Wednesday, April 15, 2026

1:00 pm shotgun start

Men's/Women's Scramble Golf Tournament

\$325 per person

Arrive at the course at least 30 minutes before the shotgun starts. Price includes green fees, cart, box lunch, and beverage.



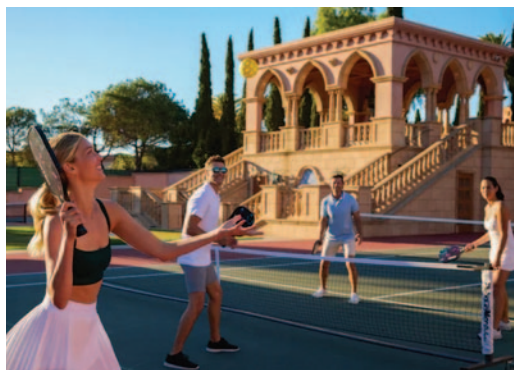
The Grand Golf Club

Set amidst stunning natural surroundings, this championship course offers 7,160 yards of expertly designed fairways and greens, catering to players of all skill levels. Enjoy world-class practice facilities, personalized service, and breathtaking views at every turn. The Grand Golf Club is more than a course—it's a destination.

1:00 pm – 3:00 pm

Pickleball

Get ready for some friendly competition and fun on the court! Pickleball is a fast-growing sport that combines elements of tennis, badminton, and ping-pong, making it easy to learn and enjoyable for all skill levels. Whether you're a seasoned player or trying it for the first time, this is a great opportunity to stay active, have fun, and network with fellow EMA members in a casual and engaging setting. Includes equipment and a Pro to coordinate play.



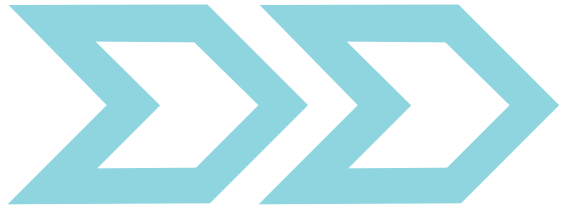
12:00 pm – 4:30 pm

Catamaran Cruise

\$150 per person

Cruising around the San Diego harbor on a 60-foot sailing catamaran, guests will see sea lions, exotic birds, and a variety of marine life. Catamarans are extremely stable with dual hulls, offering speed, comfort and fun, guests won't even know they're on the water. Light refreshments will be served.

REG



[Information]

By Registering for this meeting, you signify that you have read, understand, and agree to abide by EMA's policies on registration, housing, cancellation, spouse/guest registration, and entertainment. Please visit www.envelope.org for complete details. Each registrant must use a separate form or register separately online, and each attendee employed by a member company must register. Spouses will have a separate registration fee, and children not employed by a member company are not required to pay the registration fee. If registering via mail, return a copy of the registration form to EMA and keep a copy for your records. All registrations must include payment in full.

How to Register

Use the enclosed registration form or visit the EMA website at www.envelope.org to register online or download the meeting registration form.



MAIL: You may mail your registrations, including payment in full, directly to the EMA office using the enclosed self-addressed envelope



ONLINE: You may register online by visiting <https://portal.envelope.org> and clicking "Event Calendar."

Accessible Accommodations



If you require any special accommodations to participate in any of the meetings or other activities, please indicate your specific needs on the enclosed registration form or contact the EMA office at +1 703-739-2200.

Travel Information

Transportation

The San Diego International Airport (SAN) is 20 miles from the hotel and easily accessed by taxi or your favorite ride share.

Parking

Valet Parking - \$40 per night

What to Wear

The average temperature in April is a high of 69° and a low of 56° Fahrenheit. Business casual is the recommended attire for all committee meetings and sessions. Suggested attire for the sessions includes slacks, polo-type shirts, or button-down collared shirts for the men. Slacks, skirts, polo-type shirts, or blouses are recommended for women.

Dress for the Welcome Reception is business attire, jacket optional. Come dressed in casual outdoors attire for the Industry Partners Party.

Car Rental

EMA has partnered with Avis, and AWD Number J659196 has been assigned for our event. Please use this number to take advantage of the EMA group discount for your car rental needs. Please contact their Meetings and Convention Department at 1-800-525-7537 if you have any special requirements or requests.

HOTEL

[Information]

Fairmont Grand Del Mar

5300 Grand Del Mar Court » San Diego, CA 92130 » 1-858-314-2000

Fairmont Grand Del Mar is an award-winning luxury resort nestled on over 400 acres of pristine gardens and wild coastal canyon in Northern San Diego, California. Inspired by Old World Mediterranean and Italian villa architecture, the resort feels more like a grand private estate than a typical hotel, with elegant design, lush landscaping, and scenic views of the surrounding Los Peñasquitos Canyon Preserve and golf course.

11



ADDITIONAL INFO:

The following guestroom rate has been guaranteed for the EMA 2026 Annual Meeting. Based on availability, EMA group rates will be honored over the meeting dates and for reservations arriving up to three days before the meeting and departures up to three days after the meeting. **The EMA special group rate will be available until March 20, 2026, or until the room block is sold out.**

Reservation requests received after **March 20, 2026**, or once the room block is full, will be accepted on a space and rate available basis. A deposit of one night's room rate is required to hold each reservation.

EMA Guestroom Rate:

\$399.00+Tax

- » **Online:** [Fairmont Grand Del Mar online reservations](#)
- » **Call the Reservation number:** 1-855-314-2030

When making your reservation, refer to the EMA 2026 Annual Meeting Room Block.

FUTURE MEETING DATE

EMA 2027 Annual Meeting

April 12-17, 2027

PGA National Resort

Palm Beach Gardens, Florida



EMA
700 S. Washington Street
Suite 260
Alexandria, VA 22314

2 Easy Ways to Register: Complete Sections A through D

1 MAIL: EMA, 700 S. Washington St., Ste. 260, Alexandria, VA 22314

2 ONLINE: www.envelope.org

A. MEETING REGISTRATION INFORMATION

(Please print or type full name of registrant)

Each participant from a member company must register for the meeting on a separate form. Companions, non-industry related children and/or guests may be included on one form. If you have questions, please contact the EMA office at (703) 739-2200.

REGISTRANT *(Last, First / Nickname for Badge)*SPOUSE/COMPANION *(Last, First / Nickname for Badge)*CHILD *(Last, First / Nickname for Badge)*GUEST - If Attending Entire Meeting *(Last, First / Nickname for Badge)*

COMPANY

BUSINESS PHONE *(with area code)*

MAILING ADDRESS

CITY, STATE, ZIP

EMAIL ADDRESS

- This is my first Meeting.
 I would like to be a member host to a first-time attendee.

B. REGISTRATION FEES

(All fees to accompany this registration. Funds must be paid in U.S. Dollars)

Meeting registration fees include admittance to all meeting functions as listed on the enclosed Schedule of Events, with the exception of events with limited attendance as noted and Optional Activities with separate fees listed below.

- Regular and Prospective Members ONLY!**
- On or Before March 10 - Each Registrant \$ 1,475.00
 After March 10 - Each Registrant \$ 1,575.00
- Associate Member Registration fees:**
- On or Before March 10*
- First registrant from an organization \$ 2,400.00
 2nd - 6th registrant from an organization \$ 2,300.00
- After*
- First registrant from an organization \$ 2,500.00
 2nd - 6th registrant from an organization \$ 2,400.00
- Spouse/Guest Registration Fees** \$ 500.00
- Off-Site Registration Fee** *(Only if you are not staying at host hotel; waived if home residence is within 25 miles of hotel)* \$ 300.00

C. EVENTS

Note: All tours and activities are based on certain minimums. If minimums are not met, activities may have to be cancelled.

- Men's/Women's Golf Tournament**
 \$ 325 x member ___ spouse ___ child ___ guest ___ Total = \$ _____
- Industry Partners Party:** The cost of dinner is included in your registration fee for one registered member and their registered spouse/companion. If you have additional guest/children that you would like to attend the Party. See cost below.
- Member _____ Spouse _____ Total Attendee(s) _____
 Guest/Children \$160 each _____ Total = \$ _____
 Not attending Industry Partners Party
- Pickleball:** Member ___ Spouse ___ Total Attendee(s) _____
- Catamaran Cruise**
 \$ 150 x member ___ spouse ___ child ___ guest ___ Total = \$ _____

D. TOTAL FEES AND PAYMENT INFORMATION

Please TOTAL ALL Registration & Optional Fees = \$ _____

Please check one: Check VISA MC AMEX

Name on card: _____

Signature: _____

Card #: _____

Exp. Date _____ (3) or (4) Digit security code _____

OTHER REQUIREMENTS

-
- Special Dietary Requests:**
- (Only special requirements will be honored.)*

-
-
- Accessible Accommodations:**

Please indicate any special requirements, or call the EMA office at (703) 739-2200.

CANCELLATIONS:

Refunds are given for meeting registrations ONLY. Cancellations received in writing on or before March 10, 2026 will receive a full refund less a \$100 processing fee. Cancellations received in writing between March 11-25 will receive a 50% refund. No refund will be given after March 25, 2026.

Complete and return payment to:

EMA, 700 S. Washington Street, Suite 260

Alexandria, VA 22314 Email: kmoses@envelope.org**PLEASE KEEP A COPY OF THIS FORM FOR YOUR RECORDS.**

Date Sent to EMA _____ Date Received by EMA _____